



South Gloucestershire
and Stroud College

SGS Stroud Campus Safeguarding Team

If you are a student or member of staff with a safeguarding concern you can talk to any member of staff or one of the safeguarding team below



Moira Foster-Fitzgerald

Chief Group Services Officer
& DSL

01453 761113
07730 133532



Liam Evans

Assistant Principal,
Corporate Development

01453 761296
Stroud Campus
Room 114



Jo Johnson

Inclusion Manager and
Deputy DSL (Stroud)

01453 761119
07813 993903
Stroud Campus
Room 228



Jackie Kane

Lead Safeguarding
& Wellbeing Mentor

01453 847319
Stroud Campus
Room 228



Alison Gourmley

Education & Wellbeing
Mentor

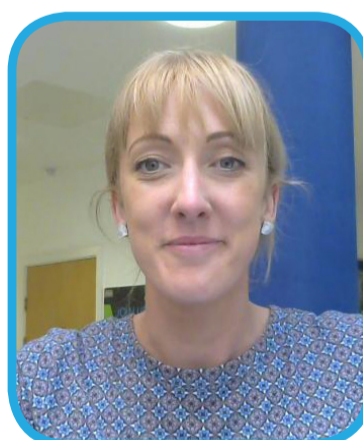
01453 847323
Stroud Campus
Room 228



Lee Ferris

Head of HE Data

01453 761146
Stroud Campus
Room 237



Jessica Glanfield

Education & Wellbeing
Mentor

01453 761120
Stroud Campus
Room 228



Jess Valentine

Education & Wellbeing
Mentor

01453 847310
Stroud Campus
Room 228

If you have a concern out of hours, you can seek support from
the following external organisations:

NSPCC Childline: **0800 1111**

Samaritans: **116 123**

Gloucestershire Emergency Duty Team (out of hours): **01452 614194**

edt@gloucestershire.gov.uk

