

YOUR FUTURE YOUR SGS

FULL TIME COLLEGE COURSES 2024/25



sgs

South Gloucestershire
and Stroud College

WELCOME TO SGS COLLEGE



Thank you for taking the time to look at the new South Gloucestershire and Stroud (SGS) College prospectus for September 2024 entry. We recognise that many of you have had disrupted learning and our aim is to support you catch up on your missed education as well as providing you with the social aspects that make studying such a rich and fulfilling experience.

Our programmes are designed to enable you to progress as individuals who thrive within our economy, who are responsible and caring citizens in society and who are also passionate about their environment. We do this in an encouraging yet challenging manner, where learners are highly supported, both inside and outside of the classroom. The College, one of the newest in the country, was formed by the merger of Filton and Stroud Colleges to create SGS College in 2012 and we have recently celebrated our 10th anniversary.

SGS has six main campuses spread across Gloucestershire, Bristol and South Gloucestershire with over 4000 full-time 16–18-year-old learners, 2000

apprentices and 5000 adult students. We work closely with many large and small employers to ensure our courses are designed to help you progress into employment, onto an apprenticeship or to continue your studies at a higher level. Work experience and projects designed by employers are very important parts of our courses at SGS.

We are focussed on providing you with a rich and inclusive learning experience in excellent resources and over the last decade we have invested over £50million in our sites and over the next 10 years we have an ambition to invest a further £100million, including the redevelopment of our Filton Campus.

The College staff are all focussed on ensuring every learner is challenged to achieve their full potential and to leave the College with increased self-believe, confidence and the employability skills that employers really want. We also feel it is incredibly important to celebrate the success of all of your achievements and to praise

you for all the positive actions you take.

This prospectus is a good starting point to find out if our college is the right one for you, but the best way to find out is to come and visit us. We have plenty of open days and evenings throughout the year – check out the dates and venues on the back cover. I look forward to welcoming you to college and encouraging you to embrace 'your future' at 'your SGS'.

Sara-Jane Watkins

SGS College Principal
sara-jane.watkins@sgscol.ac.uk





WHY CHOOSE SGS COLLEGE

SGS has gone from strength to strength since 2012 when it was formed between the mergers of Filton and Stroud Colleges.

In our last Ofsted inspection, we received 'Outstanding' grades for leadership and management, learning support, creative and performing arts, employability, business and sport.

SGS is one of the largest and most successful colleges in the country. Success rates and the amount of progress that learners make whilst at the college are among the best in the region, and our multimillion pound investment programme provides the best environment, with

state-of-the-art equipment and resources to ensure that learners have the best chance of entering employment, apprenticeships or another course in further or higher education after completing their qualification.

Alongside the wide range of successful full- and part-time courses offered at the College, SGS has an excellent reputation for delivering work-based learning programmes, such as apprenticeships, higher

apprenticeships, traineeships and professional training.

The thriving enrichment programme offered across all campuses to all full-time learners provides for extra classes, trips, events and activities. The College's student union organises many of the exciting enrichment activities and is run by students, for students, whose contributions help shape day-to-day life at the College.



YOUR FUTURE IS OUR PRIORITY

WE ARE PASSIONATE ABOUT YOUR FUTURE - FROM YOUR EDUCATION AND WELLBEING, TO THE WORLD YOU LIVE IN. WE ARE A COLLEGE THAT STRIVES TO POSITIVELY CHANGE PEOPLE'S LIVES AND ADD VALUE TO OUR COMMUNITIES. WE PRIDE OURSELVES ON PROVIDING EVERYONE WITH ACCESS TO HIGH-QUALITY AND INNOVATIVE EDUCATION AND TRAINING IN A FRIENDLY CULTURE OF MUTUAL RESPECT AND SUPPORT.

YOUR FUTURE, YOUR SGS

CAMPUSES

F Filton Campus / SGS Sixth

Filton Avenue, Filton, Bristol, BS34 7AT
T: 0117 931 2121 F: 0117 931 2233

S Stroud Campus / SGS Create

Stratford Road, Stroud, Gloucestershire, GL5 4AH
T: 01453 763424 F: 01453 753543

W WISE/Brunel Campus

New Road, Stoke Gifford, Bristol, BS34 8LP
T: 0117 919 2601 F: 0117 377 6828

Q Bristol Queens Road Campus

Queens Road, Bristol, BS8 1PX
T: 0117 973 6259 F: 0117 973 4125

B Berkeley Campus (UTC)

Gloucestershire Science and Technology Park, Berkeley Green, Gloucestershire, GL13 9FB
T: 01453 761240

H SGS Horizon

Unit E & F Horizon, 38 Taurus Road, Patchway, Filton, Bristol, BS34 6FE
T: 0800 0567 253



CONTENTS

WELCOME TO SGS	02	GAME DESIGN & DIGITAL MEDIA	47
WHY CHOOSE SGS?	05	GCSE	49
CAMPUSES	08	HAIRDRESSING & BEAUTY	51
SCHOOL VS COLLEGE	10	HEALTH & SOCIAL CARE	53
T LEVELS	12	MEDIA	55
QUALIFICATIONS EXPLAINED	14	MUSIC	57
PROGRAMME OF STUDY	16	PERFORMING ARTS	59
SGS SIXTH	18	SPORT	61
SGS CREATE	20	PUBLIC SERVICES	63
SGS SPORT	22	SGS SPORTS ACADEMIES	65
ACCESS TO HIGHER EDUCATION	25	TRAVEL & TOURISM	67
ANIMAL SCIENCE & CONSERVATION	27	STUDENT SUPPORT	68
APPRENTICESHIPS	29	FINANCE	71
ART & DESIGN	31	SGS PLUS	73
BUSINESS	33	SGS BERKELEY GREEN UTC	74
COMPUTING & IT	35	UNIVERSITY CENTRE	75
CONSTRUCTION	37	SUSTAINABILITY	76
EDUCATION & CHILDCARE	39	SGS ALUMNI	77
EMPLOYABILITY & PROGRESSION	41	HOW TO FIND US	78
FORENSICS & CRIMINOLOGY	43	APPLICATION PROCESS	79
FOUNDATION	45	EQUAL OPPORTUNITIES/	

STROUD CAMPUS

/ GLOUCESTERSHIRE **S**



SGS CREATE

Create your own future

FILTON CAMPUS

/ BRISTOL **F**



WISE CAMPUS

/ BRISTOL **W**

BRUNEL CENTRE

/ (WISE) BRISTOL **B**



QUEENS ROAD

/ CLIFTON **Q**



HORIZON CAMPUS

/ BRISTOL **H**



SCHOOL

SGS offers a different learning environment to that at a school sixth form. For a start, you will notice that the range of courses available is much wider, but also college is about more than just what you study.

THE CLASSROOM

At SGS you can take advantage of the vast range of subjects on offer and choose the course that you want to study. You also get to attend lessons in the clothes that you want to wear, as there is no school uniform here.

THE TEACHERS

There is mutual trust and respect between tutors and students, so you are given the freedom to organise your time and studies. Speaking of tutors, ours have names – no 'sir' or 'miss' at SGS!



THE CULTURE

Around campus, you're sure to bump into a great mix of people from a wide range of ages, backgrounds and interests. At school, your classmates are all the same age, but at college they could be anything from 16 to 80! So, it's sure to be a fun, vibrant and unique learning environment.

COLLEGE

WANT TO FIND OUT MORE ABOUT COLLEGE LIFE?

Come along to an SGS open event, where you can take a campus tour, speak with tutors and careers advisors and meet SGS learners who can give you first-hand experience of what life at SGS is really like.



THE OPTIONAL EXTRAS

Outside of your lessons, you can take advantage of the numerous enrichment opportunities on offer: join a sports academy, participate in student union activities, brush up on your studies in the LibraryPlus Centres or get advice and guidance from learning support or a careers advisor.



**T LEVEL
QUESTIONS
ANSWERED**

**T LEVEL
QUESTIONS
ANSWERED**

**T LEVEL
QUESTIONS**

T-LEVELS

THE NEXT LEVEL QUALIFICATION

AT SGS COLLEGE

T-Levels (Technical Levels) are a new type of vocational qualification designed to bring classroom learning and an extended industry placement together to give young people a new two-year, full-time study programme equivalent to 3 A Levels.

T Levels are ideal if you have finished your GCSE's and want the knowledge and experience to get straight into employment, an apprenticeship or higher education.

3 GREAT REASONS TO CHOOSE A T-LEVEL:

- 1** T Levels give you the chance to learn what a real career is like while you continue your studies. You'll spend 80% of your time in the classroom and 20% on a 45-day placement with an employer to give you the skills and knowledge companies look for.
- 2** T Levels have been designed with leading businesses and employers to give you the knowledge and skills you need.
- 3** Your T Level will be worth ucas points - a T Level Distinction* is worth the same as 3 A Levels at A* - and will be recognised by universities and other education providers so you can choose to continue studying if you wish.

T-LEVELS AT SGS:

- Health - Supporting the Adult Nursing Team
- Digital Production, Design and Development
- Education & Childcare

Want to find out more?

Come to one of our open events and find out more about these exciting new courses or visit our website for course information and to apply.

QUALIFICATIONS EXPLAINED

Qualifications are split into academic, vocational, and work-based learning.

- Academic qualifications include GCSEs, A Levels and Degrees.
- Vocational qualifications include T Levels, BTECs and Higher National Certificates.
- Work-based qualifications include NVQs and Degree Apprenticeships.

The course that is right for you depends on what you plan to do afterwards; whether that's getting your ideal job or going to university. It's important to know about the different course levels, so here is a quick and easy explanation of what we offer.

ENTRY LEVEL

Entry Level qualifications do not have entry requirements and are a good start for somebody wanting to work their way through the course levels with no previous qualifications. These start at Entry 1 up to Entry 3. These can include part time courses or programmes for EHCP learners.

LEVEL 1

Equivalent to GCSE grades 3 to 1 or D to F

These qualifications are a great introduction into one subject, alongside personal development and work experience, which will prepare learners for the next level of learning.

LEVEL 2

Intermediate courses

These qualifications are equivalent to GCSEs at grades 4 - 9 and prepare learners to progress to a Level 3 course or an Apprenticeship within the College.



LEVEL 3

Advanced BTECs and T Levels

These focus on studying one **broad** subject, alongside personal development. These are worth up to 168 UCAS points, which is the same as three A*s at A Level.

APPRENTICESHIPS (LEVEL 2 - 7)

Kick start your career

An Apprenticeship is a learning programme that combines work and study. Apprentices benefit from 'on the job' learning as well as some study. They will receive at least the minimum apprenticeship wage during their training. There are several levels of apprenticeship, ranging from Intermediate (Level 2) to Degree Level (Level 7)

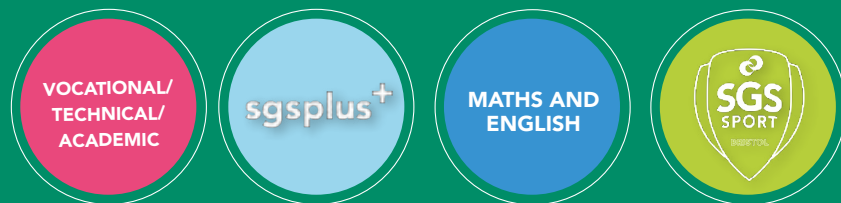
LEVEL 4 - 7

Equivalent to university level courses

These include Higher National Qualifications eg. HNC, HND and Foundation Degrees (2 Years) and Honours Degrees (3 Years). Explore our range of courses at uni.sgscol.ac.uk

PROGRAMME OF STUDY

SGS learners will have a competitive advantage in the workplace due to our approach, which is dedicated to ensuring that learners are work ready. Our study programmes include academic/vocational qualifications of study (e.g. Level 2 Sport or A-levels), maths and English (either Functional Skills, GCSE resits or upskilling), work experience/ placements, enrichment and tutorials. In addition, our study programmes help develop the softer skills, such as the ability to communicate effectively and to be confident and articulate individuals who are able to apply themselves to a task and to work effectively as team members.



SGSPlus+ Your Personal Development Programme!

SGSPPLUS+ is the name for our Personal & Social Development programme that all full-time learners will complete within their study programme during their time at SGS College, it is made up of Tutorials, Enrichment and Work Experience.

The SGSPPLUS+ Programme instils essential work-ready skills in a variety of areas that include communication, teamwork, resilience, problem-solving and independent thinking, preparing you for your next steps and future success. The SGSPPLUS+ Programme equips you with the skills required to thrive during your future studies, increase career prospects and enhance your employability skills that are deemed highly desirable by employers.

Alongside your SGSPPLUS+ Tutorial programme, you will also undertake 36 hours of Enrichment where you will elevate your understanding of yourself and the wider world. Each study programme and level has a completely bespoke Enrichment programme that is designed around your course, your needs as a learner and industry trends.

Your SGSPPLUS+ Team create incredible opportunities for you to get involved in,

including trips, guest speakers, residentials and information stations. Previous experiences include, University Exploration Residential at Falmouth University, Financial Education with Elent Finance, Motivational Mindset with Kheron Gilpin and all things "The Apprentice" with season 16's finalist Britt Carter.

We also provide you with the opportunity to join the vibrant SGS community, make memories and make a difference. Make your contribution by joining our learner Committees centred around Racial Equality, Sustainability and LGBTQ+! It doesn't stop there, Learner experience is at the heart of all we do and our core College services such as Library+, Careers, Money Management Service, Wellbeing and Work Placements all work in tandem to create memorable experiences and enrichment-based activity. Be it our Careers & Work Placement Essential Work-Ready Programme, our LibraryPLUS+ Chess Tournaments or our Wellbeing team Resilience Labs, you can guarantee, we've got you covered.

When you arrive at SGS be sure to ask your tutor about what Enrichment is on offer for your course!

ACADEMIES AT SGS

Here at SGS we have a range of different academies, all are designed to allow those students wanting to go above and beyond to gain a little bit more from their time here!

999 Academy

For those students wanting to go into the blue light services or armed forces including the Ambulance, Police, Fire, Army, Navy, RAF or the R.N.L.I. The 999 Academy is perfect for those students who are studying Public Services or have an aspiration for a career in the above services / forces.

Business Academy

This runs at both Stroud and Filton, and is designed for those students wanting to go into the world of business, there are opportunities to hear from guest speakers working in the world of business, finance and accounting. There are also opportunities to get involved in consultancy projects with a range of potential employers.



The DigiED Academy

This is for students wanting to go above and beyond to develop their digital skills and prepare them for the digital world. You will cover a range of topics through the academy including digital resilience, social media and your digital footprints.

Sports Academy

Here at SGS Sport we run an outstanding sports academy that allows you to combine elite level sport with an outstanding education. We currently run 11 Sports Academies including Male and Female Football, Basketball, Rugby and American Football to name a few.

Work Placements/ Extended Industry Placements

Work placements and promoting employability are key elements of all our full-time study programmes here at SGS College. Work placements have been proven to increase your chances of gaining entry to university and future employment and will also increase your confidence, self-esteem and communication skills.

The Work Placement Team at the college will support you in sourcing relevant work placements and will help you to develop the necessary skills to contact employers yourselves. They also have links with a wide range of employers which you will have access to. We aim to develop the skills you need to ensure that you have a bright future when leaving the college.

Maths & English

A key requirement to obtaining many jobs is achieving a good standard of English and maths. Most employers tend to look for at least a grade 4 (grade C) at GCSE. SGS, therefore, enrolls all learners aged 16–18 who do not yet have a GCSE grade 4 (C) in these subjects on either GCSE or Functional Skills programmes, alongside their main study programme. This is in line with government policy and all colleges in England.

A LEVEL OPTIONS

AT SGS SIXTH

SUBJECTS

SGS Sixth Form offers a range of subjects to help you flourish and become outstanding. Our courses open up a wide range of possibilities for students in the world of work, enterprise, further and higher education. Why not get in contact with us to find out more.

- Art (Visual Arts)
- Biology
- Biomedical Science
- Business
- Chemistry
- Core Maths
- Criminology
- Economics
- English Language
- English Literature
- Extended Project Qualification
- Film Studies
- Food Science & Nutrition
- Forensic Science
- Further Mathematics
- Geography
- History
- Law
- Mathematics
- Media
- Philosophy Ethics & Religion,
- Photography
- Physical Education
- Physics
- Politics
- Psychology
- Sociology
- Spanish

**VISIT OUR WEBSITE
FOR FURTHER
DETAILS AND BE A
PART OF BRISTOL'S
FASTEST GROWING
SIXTH FORM**

www.sixth.sgscol.ac.uk 



BE INDIVIDUAL BE OUTSTANDING

Be a part of Bristol's fastest growing sixth form!

ACADEMIES

The Sixth Form Academies are an essential and exciting part of life here at SGS Sixth. We want students to be well-rounded, articulate individuals who like to embrace new and exciting opportunities. All students will join one or more Academies (Academic, Aspire, Skills or Sports) which will compliment your studies or help you to build important employability skills and make you stand out to universities. They will help you to meet like-minded students and to hopefully, try something new. Check out a list of our current opportunities at

www.sixth.sgscol.ac.uk/academies

STUDY PROGRAMME

A study programme at SGS sixth is made up of your subject choices; which are either three or four A Level subjects or Biomedical Science or Forensic Science if choosing these BTECs. Learners add to this at least one of our highly regarded academies (see left) to supercharge their learning or make them stand out as candidates to universities or employers. We also have an honours programme for students aspiring to apply for Russell group universities and a medical academy for those wishing to apply for competitive medical courses.

Our learners also attend a weekly group tutorial with a dedicated tutor who also helps you track your progress through termly 1:1s. Lastly all learners will need to complete 39 Work Experience hours over the course of their first year as part of their programme to help them with their UCAS applications or to stand out to employers.



Create your own future

At SGS Create, our vision is to create an education environment that inspires you to be your best. With an aspirational, supportive and flexible curriculum with learners' needs at its heart.

This much needed provision ensures 14-16 year olds for whom mainstream education is not right will have the opportunity to access first class facilities and the right learning environment to enjoy their education. Create is ideal for those who are keen to learn, who may need to access more pastoral support services or support through therapies and/or looking for an alternative, with a particular interest and focus on the creative sectors

LEARN SKILLS

SGS Create allows learners to focus on a key curriculum, plus a vocational pathway in a supportive and nurturing environment.

BE CREATIVE AND RESPECTFUL

Learners may not cope well with the structure in place at most secondary schools and/or suffer with social anxieties. Learners with an interest in the creative sectors will thrive at SGS Create.

GAIN QUALIFICATIONS & EXPERIENCES

Students engage with a curriculum focused on core GCSE subjects, including English Language, Maths, and Double Award Science. They also choose a specialized 'Create Vocational Pathway' led by industry-experienced instructors. Alongside, students hone their IT skills and explore essential aspects of PSHE/RSE. Each week, a unique PE lesson offers an approach to physical education which will be very different from their past experiences.

PROGRESS

With excellent progression routes in place at SGS College, we really are with our learners every step of the way.

IMPROVE CONFIDENCE

At SGS Create a different approach to studying and being social allows our learners to feel safe, nurtured and in a better space to learn and thrive.



T: 01453 763424 www.sgscreeate@sgscol.ac.uk

SGS Create / SGS College Stratford Rd, Stroud GL5 4AH

APPLY NOW / OUTSTANDING BY STANDING OUT / WWW.SGSCOL.AC.UK 21

SGS SPORT

Combine your passion for sport with the needs of academia at SGS, where students can enjoy some of the best sports facilities in the country at the £36 million WISE campus.

SGS Sport offers 11 Sports Academies here at the SGS WISE Campus with the opportunity to combine elite sport and an outstanding education. The academies on offer include;

- MALE AND FEMALE FOOTBALL
- MALE AND FEMALE RUGBY UNION
- MALE AND FEMALE BASKETBALL
- AMERICAN FOOTBALL
- NETBALL
- CRICKET
- GOLF
- TABLE TENNIS

The Sports Academy train and compete at the SGS WISE Campus on a Monday, Wednesday and Friday. Each Academy is timetabled around your Academic Timetable with a shuttle bus operating between the Filton and WISE Campuses.

The SGS Sport offer includes on pitch sessions, strength and conditioning sessions, psychology and access to Sports Rehab.

FACILITIES INCLUDE:

- Fully sprung Sports Hall arena which seats up to 700 people for Basketball, Netball and Table Tennis.
- Football Stadium (4G) which houses up to 200 spectators
- Purpose built American Football Stadium Pitch (3G Surface)
- Rugby Stadium Pitch with TV Gantry and seating for 100 people
- Eight lane championship standard running and athletics track
- Twelve 3G artificial five-a-side football pitches
- 2 Grass Football Pitches and 2 Rugby pitches
- Two specialist Strength and Conditioning Gym's
- Artificial short game and putting green for the Golf Academy
- Specialist Boxing Gym including a full size ring
- Sports Rehabilitation Clinic
- Modern changing rooms with access to an ice bath



ACCESS TO HIGHER EDUCATION

CAREERS AND EARNING POTENTIAL

On completion of an Access course you can progress onto a degree-level course.

GETS YOU TO UNI

Pre-Access

Access to Art and Design

Access to Business

Access to Engineering

Access to Health & Social Care

Access to Humanities

Access to Media Make-up & Hair Design

Access to Medicine

Access to Science



YOUR OPPORTUNITIES...

The Access to Higher Education Diploma is the first step to improving your career prospects and the money you earn in a range of different industries, including nursing, midwifery, social work and more.

PROGRAMMES: ACCESS TO HIGHER EDUCATION

Access to Higher Education (HE) Diploma pathways are especially designed for adults who have had a break from studying but are now planning to enter higher education. The Access to Higher Education Diploma provides subject knowledge and helps to develop your confidence and study skills, whilst also opening up new career possibilities.

The course runs for a year - starts in September 2024 until June 2025 and includes:

- 14 taught hours per week usually spread over three to four days
- Plus 10 self-study hours
- Support from a personal tutor
- Study Skills are included in the course

Access to Higher Education is the only course where the learner loan doesn't have to be repaid as long as the learner completes their undergraduate degree. You can find out more about the Advanced Learner Loan at www.sgscol.ac.uk/19-plus-funding-options

New for 24/24

Our Access to Higher Education offering for academic year 24-25 will see a new addition in the form of an fully on-line Diploma. To express your interest in this Diploma, please email the Department on: Academic@sgscol.ac.uk



Course entry requirements:

If you are 19+ and have GCSE Maths and English at grade 4 (C) or above, you can apply for an Access to Higher Education course online at www.sgscol.ac.uk/study/access. You will be asked to attend an informal interview to meet with one of the team.

Pre-Access

The Pre-Access Level 2 Extended Certificate is the ideal course for adult learners who want to progress to a university course, but do not currently hold the necessary GCSEs to undertake an Access to Higher Education Diploma. The course gives learners the opportunity to build the essential skills and qualifications needed to progress to any of our Access to Higher Education courses. The course comprises of core modules in biology, sociology, psychology and study skills, as well as GCSEs in English & maths.



DID YOU KNOW ...

- The Access to Higher Education Diploma is a recognised qualification for entry to university
- Access to Higher Education Diplomas can be completed in one year
- There is no maximum age limit to start a course on the Access to Higher Education programme



ANIMAL SCIENCE & CONSERVATION

BE FEROCIOUS IN YOUR CAREER AND EARN UP TO £50,000 AS A WILDLIFE CONSERVATION MANAGER

HANDS ON TRAINING

COLLABORATING WITH OTHERS

F L1 Pathway to Animal Science

S L1 Vocational Studies Animal

F L2 Extended Certificate Animal Science

TL **F** **S** T Level Foundation Year Animal Science

S L2 Animal Care

F L2 Diploma Animal Science

TL **F** **S** L3 T Level Animal Management

PROGRAMMES: ANIMAL SCIENCE AND CONSERVATION

The variety of positions available in the animal science and conservation industry is vast.

Whether you have experience working with animals or not, the supportive staff at SGS will give you individual attention and make sure that you get the most out of your studies. Learners get plenty of opportunities to gain hands-on experience working with our on-site animals, as well as lessons delivered by guest speakers, trips and expeditions outside the classroom and the opportunity to undertake valuable work placements.

YOUR OPPORTUNITIES...

You could have a career in fencing, land-based engineering, trees and timber – even in floristry. Or you could look after animals in places like kennels, animal rescue centres and sanctuaries. You could also work in animal hospitals, adoption centres or as an animal collection officer.

? DID YOU KNOW...

- Over 40 different species of animals live on site across our Filton and Stroud campuses
- Average UK salary for an Animal Care Worker £30,378 (Office for National Statistics)
- The animal care sector currently employs over 200,000 people in the UK in more than 20,000 businesses

GREAT FOR PEOPLE WHO...

- Love animals
- Want a career within the animal care industry
- Are passionate about conservation and the countryside
- Like hands-on work and varied responsibilities
- Like being outside in all weathers

APPRENTICESHIPS

F S H

CAREERS AND EARNING POTENTIAL

Get your degree and postgraduate studies via an apprenticeship. No fees and no student loan.

ON THE JOB TRAINING

S F Accountancy	F Management
S Bricklaying	H Painting & Decorating
S F Business Administration	H Plastering
S H Carpentry	S H Plumbing and Domestic Heating
S F Customer Service	F Procurement and Supply
S F Digital Marketing	F Project Management
S H Electrical	S H Property Maintenance
S H Fire, Emergency & Security Systems	F Software Developer
H Gas Engineering	S F Teaching Assistant
F Human Resources	F Team Leading
F Information Communication Technician	
S H Joinery	

EARN AS YOU LEARN

PROGRAMMES: APPRENTICESHIPS

SGS supports hundreds of apprentices each year, working across a wide range of industries. There are various levels of apprenticeship to consider depending on your skills and qualifications:

- Intermediate apprenticeship (Level 2)
- Advanced apprenticeship (Level 3)
- Higher apprenticeship (Levels 4–7)

An apprenticeship combines work with training. As employees, apprentices have a contract of employment and earn a wage, just like other employees. The training takes place both on and off the job.

YOUR OPPORTUNITIES...

Combine employment with training, so that you can earn whilst you learn, as well as making a valuable contribution to business and working alongside experienced staff to gain job-specific skills and qualifications.



GREAT FOR PEOPLE WHO...

- Want to earn money whilst they learn
 - Want to gain employment
 - Want to earn a salary
- Want to progress within a business
 - Want to receive training
 - Want to learn job-specific skills



DID YOU KNOW...

- Two apprentices a day start their careers with SGS
- Apprenticeships are based at three of our campuses



ART & DESIGN



**BE IMAGINATIVE WITH
YOUR FUTURE AND
EARN UP TO £72,000
AS A CREATIVE
DIRECTOR**

**CREATIVE
THINKER**

EXPERIMENTAL

S UAL L1 Diploma Art
Design & Photography

W UAL L1 Diploma Art & Design

S UAL L2 Diploma
Art, Design & Photography

W UAL L2 Diploma Art & Design

W UAL L3 Diploma Creative Practices

S W C UAL Foundation
Diploma Art & Design

S UAL L3 Diploma Creative
Practices (2D & 3D Fine Arts)

S UAL L3 Diploma Creative
Practices (Design & Materials)

NEW **S** UAL L3 Diploma Creative
Practices (Media Make-up)

S UAL L3 Diploma Sustainable Futures

S Access to Higher
Education Art and Design (Adult)

PROGRAMMES: ART & DESIGN

With the ongoing explosion of new and exciting opportunities in art and design, now's the perfect time to train for a career in this thriving industry. As an Art & Design student at SGS, you'll discover your creative potential. Our staff will challenge you to explore and experiment with a range of different practices and materials.

YOUR OPPORTUNITIES...

Careers in the world of art and design are vast and varied. You could be a drone photographer, a movie poster designer or perhaps a fashion forecaster – even an art museum curator. Whatever your creative mind wants to explore, chances are your dream career is out there waiting for you.



GREAT FOR PEOPLE WHO...

- Have a creative mind
- Are independent, proactive and resilient
- Want to learn skills that are transferable across a wide range of sectors
- Want creative freedom
- Want to develop greater hand and digital skills



DID YOU KNOW...

- According to the UK Arts Council, students that study art subjects are more employable and more likely to stay in employment
- The UK had an estimated 2.29m creative industries jobs in the year to September 2021
- With an estimated 2,040,000 jobs - the UK's creative industries are developing new jobs faster than other sectors despite record employment in the UK economy as a whole.*
- The creative department was graded 'Outstanding' in our last Ofsted inspection

* Data from thecreativeindustries.co.uk



BUSINESS

**MANAGE YOUR
FUTURE AND EARN
UP TO £80K AS
AN EXECUTIVE
DIRECTOR**

**STRONG
LEADER**

F L1 Pathway to Business

F L2 First Certificate in Business

F L3 Foundation Diploma in Business

F L3 Extended Certificate in Marketing

MOTIVATIONAL

PROGRAMMES: BUSINESS

Are you interested in a career in business? Perhaps you would like to make a living being a digital influencer? Or maybe you wish to become an accountant, lawyer or marketer? Our business courses provide an outstanding base for your progression into employment, higher education or for starting your own business. Our experienced team will offer you expert support to help you grow your confidence, skills and knowledge to succeed.

YOUR OPPORTUNITIES...

You could be tasked with managing the advertising for a Premier League club or working in an HR department for a global company. You could be part of the team that organises the Brit Awards or a lawyer defending causes that you believe in. You could have a career in accounting or money management, or you could be the CEO of your own business.



GREAT FOR PEOPLE WHO...

- Like critical thinking
- Aspire to have good communication skills
- Enjoy research and analysis
- Like generating and developing ideas



DID YOU KNOW ...

- 48.9% of Adults in the South West would consider starting their own business, making the South West one of the most entrepreneurial regions in the UK.*
- Many people working in business administration will retire over the next few years – the sector seriously needs you!
- This department was recognised as 'Outstanding' in our last Ofsted inspection

*www.businesswest.co.uk

COMPUTING & IT

**EXCEL IN YOUR
FIELD AND
BECOME HEAD OF
IT, EARNING UP
TO £140,000**

**PROBLEM
SOLVER**

TECH SAVVY

F L2 First Award IT & Computing



F T Level Foundation Year
IT & Computing



F L3 T Level IT & Computing

PROGRAMMES: COMPUTING & IT

Our Computing & IT courses will provide you with the full range of skills and knowledge in IT that are required to progress into employment or higher education. SGS has superb IT facilities, with modern equipment and software packages, including MS Office, Dreamweaver and Adobe Creative Suite. Depending on the course you choose, you may also learn programming using a range of languages; web design using Dreamweaver; graphics using Adobe Creative Suite; and games design. Our Cyber Academy offers learners the chance to gain further qualifications and to develop more specialist skills. There are also excellent progression routes onto our apprenticeship programme.

GREAT FOR PEOPLE WHO...

- Like working with computers
- Like problem solving
- Want to work in a fast-changing sector



DID YOU KNOW ...

- In the first quarter of 2020, the Information Technology (IT) sector of the Technical Consumer Goods industry generated a revenue of approximately 2.565 billion British pounds*
- IT has one of the highest rates of self-employment in the UK
- IT is of increasing economic importance to the South West
- Despite recent challenges posed by COVID-19, the UK's information technology (IT) sector has shown its resilience through continued growth, with skilled workers needed to fuel this momentum

*www.statista.com

YOUR OPPORTUNITIES...

In the UK, over 21 million people use IT at work every day. In this sector, various careers exist, such as computer and IT development, ethical hacker, internet programmer, mobile application developer, telecoms, internal operations, sales and marketing and many more.



CONSTRUCTION

**BUILD YOUR CAREER
AND EARN OVER £60K
AS A COMMERCIAL
MANAGER**

**INDUSTRY
EXPERT
STAFF**

**HANDS-ON
TRAINING**

PRACTICAL

S Entry 3 Construction Skills
(Maintenance)

S L1 Construction Skills - Brick

S L1 Construction Skills - Carpentry

S L1 Construction Skills - Electrical

S L1 Construction Skills Plumbing

F L1 Brick

F L1 Carpentry

F L1 Painting & Decorating

F L1 Plumbing

F L1 Electrical

F L1 Plastering

F L1 Construction Skills
Award and Diploma

S F L2 Technical Certificate Brick

S F L2 Technical Certificate
Site Carpentry

F L2 Technical Certificate
Painting & Decorating

S F L2 Technical Certificate Plumbing

S F L2 Technical Certificate
Electrical Installation

F L2 Technical Certificate Plastering

PROGRAMMES: CONSTRUCTION

Are you practical? Do you want to learn skills that are always in demand? Our wide range of construction courses will prepare you to enter the UK's biggest industry.

At SGS, we offer excellent training programmes at various levels to suit your individual needs and ambitions. Students are able to develop practical skills in our well- equipped workshops, with teachers who have worked extensively within the industry.

YOUR OPPORTUNITIES...

Forecasts show that the South West's construction industry will need thousands of new recruits over the next few years.



GREAT FOR PEOPLE WHO...

- Enjoy working outdoors
- Like hands-on work
- Are practically minded
- Pay attention to detail
- Like working with lots of different people



DID YOU KNOW ...

■ The annual recruitment requirement in the South West of 3.6% per year is above the UK average of 2.0% and means an extra 41,950 workers will be needed from 2022 to 2026*

*www.citb.co.uk

■ SGS apprentice James Boyle made it to the national finals of a plumbing competition in 2017

■ The construction sector is one of the largest in the UK economy – employing 3.1 million people or over 9% of the workforce.**

**Gov.uk

EDUCATION & CHILDCARE

**PROGRESS ONTO
HE TO STUDY
PRIMARY TEACHING
AND EARN FROM
£23,000 TO £40,000**



**GOOD
WITH
PEOPLE**

**CARING AND
SUPPORTIVE**

S L1 Vocational Care Pathways (Early Years and Health & Social)

F L1 Pathway to Education & Childcare

F L2 First Award Education & Childcare

TL **F S** T Level Foundation Year Education & Childcare

TL **F S** L3 T Level Education & Childcare

PROGRAMMES: EDUCATION AND CHILDCARE

Working with children in nurseries, schools, hospitals or at home can be extremely rewarding. If you want a career working with young children, SGS can help you to achieve the right qualifications in an exceptional teaching and learning environment. Once qualified, you'll be equipped to provide a safe and enabling environment for children to prosper in.



DID YOU KNOW...

- There are over 71,000 childcare providers registered with Ofsted and delivering Childcare in the UK*
- Early Years teachers, also known as nursery teachers, earn on average £18,000 to £30,000 per year

*Gov.uk

GREAT FOR PEOPLE WHO...

- Enjoy working with children
- Are patient and understanding
 - Like practical work
 - Like working with a variety of people

YOUR OPPORTUNITIES...

There are many different Early Years professions that provide an opportunity to make a difference to the lives of children. Early Years graduates enter employment in a variety of sectors, including local authorities, charities, schools, nurseries and health authorities.



EMPLOYABILITY & PROGRESSION

ON COMPLETION
OF AN ENTERPRISE
COURSE YOU CAN
PROGRESS ONTO
A LEVEL 2 COURSE

CAREER
STARTER

S Aspire

S L1 Vocational Studies (Aspire+)

F Enterprise Study Programme

F Enterprise PLUS Study Programme

DECISION MAKING

PROGRAMMES: EMPLOYABILITY AND PROGRESSION

SGS College has developed 'Enterprise' (Filton) and 'Aspire' (Stroud) to offer a course to students who haven't gained the required English and maths qualifications to meet entry requirements for a vocational course, or for those students that are unsure of the vocational area they wish to learn in.

This course develops an understanding of the knowledge and skills required to run an Enterprise/Aspire Project, which will be undertaken for a week towards the end of the course. You will develop confidence and self-esteem, as well as improve on assertiveness, decision-making, interpersonal skills, presentation skills and teamwork – all the important skills required for life and the world of work.



GREAT FOR
PEOPLE WHO...

- Want to gain English and/or Maths at GCSE or FS Level 1/2
- May need additional support, whether academically or emotionally

?

DID YOU KNOW ...

- Our groups are small
- This year Enterprise have raised approx. £2000 for charity to date
- 26% of learners achieved their English and Maths at the end of the first term!
- Enterprise week is fun but challenging

YOUR
OPPORTUNITIES...

- Level 1 course in vocational area
- Level 2 course in vocational area
- Apprenticeship



FORENSICS AND CRIMINOLOGY



**ATTENTION
TO DETAIL**

**CRITICAL
THINKING**

S BTEC Extended Diploma
Forensics and Criminology

PROGRAMMES: FORENSICS AND CRIMINOLOGY

Driven by a passion of curiosity and discovery, Science at SGS College equips you with the skills and knowledge for a wide range of careers as well inspiring you every step of the way



DID YOU KNOW ...

- Employment in the Forensic Science Sector has grown at an unprecedented rate over the last ten years, due largely to advances in technology such as the National DNA Database, and an increased reliance on forensic techniques by police forces for serious and volume crime.
- You can change the world for the better ensuring that there are environmental regulations in air quality, waste, clean water, and pollution.
- You can work anywhere in the world.

GREAT FOR PEOPLE WHO...

- Who have a good attention to detail
- Have good analytical and interpretative skills
- Who enjoy teamwork and working independently
- Who are effective verbal and written communicator

FOUNDATION STUDIES



**FEEL
SAFE**

**DEVELOP
LIFE SKILLS**

FOUNDATION FUTURES

FOUNDATION VOCATIONAL

General
Catering
Horticulture
Construction
Creative Media
Animal

FOUNDATION FOR EMPLOYMENT

Employability
Supported Internship

PROGRAMMES: FOUNDATION STUDIES

Our Foundation Department offers a range of courses designed to prepare students for adulthood and independent living. Our facilities provide students with access to all the resources they need to succeed, including an independent living kitchen and inclusive digital media and art facilities.

Our curriculum is aligned with the Preparing for Adulthood agenda and offers clear progression routes for all students, leading to further courses, independent living, supported internships, or employment.

In the Foundation Department, students will learn the following skills:

- **Employability skills:** Students will learn how to write a CV, prepare for job interviews and will also attend work experience placements.
- **Independent living skills:** Students will practice skills including cook, clean, manage their finances, and use public transportation.
- **Personal and social development skills:** Students will learn how to communicate effectively, build relationships, and manage their emotions.

Our Foundation Department is the perfect place for students who are eager to learn and grow. We provide a supportive and inclusive environment where all students can thrive.



YOUR OPPORTUNITIES...

These courses are designed for young people who have experienced barriers to learning for a wide range of reasons, including young people with special educational needs

Our courses are carefully planned to support the development of the skills young people will need to progress into vocational training, employment and independence.

ON COMPLETION OF A FOUNDATION COURSE YOU CAN PROGRESS ONTO A LEVEL 1 OR 2 QUALIFICATION, INCLUDING BOTH VOCATIONAL COURSES AND GCSES.



DID YOU KNOW...

- Our courses are carefully planned to support the development of the skills young people will need to progress into vocational training, employment and independence.

GAME DESIGN & DIGITAL MEDIA

**CREATE A NEW
WORLD AND BECOME
A COMPUTER GAMES
DEVELOPER EARNING
UP TO £70,000**

**PROBLEM
SOLVING**

SW L2 Diploma Games Design

SW L3 Diploma Games Design

**PASSION
FOR TECH**

PROGRAMMES: GAMES DESIGN & DIGITAL MEDIA

Whether you're interested in art, animation or scripting, expand your horizons with Games Design and step into a large, multi-disciplined industry with countless opportunities. Whether you're inspired by the design of Aloy in Horizon Zero Dawn, the exciting game play of Fortnite or the level design of a Super Mario Bros. game, SGS College offers students the opportunity to work with specialised staff to develop essential skills for working in the computer games industry.

GREAT FOR PEOPLE WHO...

- Have aspirations to start a new career
- Want to enter higher education
- Want a job with career prospects
 - Want to explore new ways of thinking

YOUR OPPORTUNITIES...

As a games developer, you can explore a competitive and fast-paced industry, with programming, 3D modelling, art, audio and animation collaborating to make some of the biggest products in the world. You'll be involved in creating and producing games in teams or individually using industry-standard software behind big games such as Fortnite. No matter who you are, there are opportunities to grow yourself and your abilities in a creative field that generates the highest revenue in the whole entertainment sector for the UK.



DID YOU KNOW...

- The flourishing Southwest games industry is backed by £238,000 funding! High demand for digital skills in the southwest region, with 57% job posts seeking programming professionals, the Games industry offers unparalleled opportunities for growth and success*

*WECA: Horizon Scanning:
Post-16 Education and Skills Infrastructure



GCSE

CAREERS AND EARNING POTENTIAL

On completion of a GCSE course you can progress onto a Level 3 vocational course or A-levels

ACHIEVE
YOUR
POTENTIAL

F Biology

F Chemistry

F English Language

F English Literature

F Film Studies

F Maths

F Higher Maths

F Physics

F Sociology

S GCSE PLUS Programme (1 Year)

S GCSE PLUS 14-16 (2 Year)

PROGRAMMES: GCSE

PROGRESS TO YOUR NEXT STEP

Whether you're looking for that second chance or, you want to create your own bespoke study programme of up to five GCSEs, SGS College's GCSE Plus Programme offers a mature, independent environment where learners can achieve their true academic potential and emerge as more confident individuals, ready to take on their next challenge.

GCSE Plus 14 -16 is a two year course for learners who have elected to home educate and have been deregistered from a school for a minimum of 6 months. A one year option is also available for those age 15+. Please see our website for further information: www.sgscol.ac.uk/study/gcse/gcse-plus-all-subjects.



DID YOU KNOW...

- A new grading scale of 9 to 1 is now being used for GCSEs with 9 being the top grade.
- Even if you're looking to move out of education, many employers view good GCSE results as a prerequisite

GREAT FOR PEOPLE WHO...

- Want to obtain qualifications to progress their career or education
- Want to learn something new
- Need help resitting GCSE Maths and English



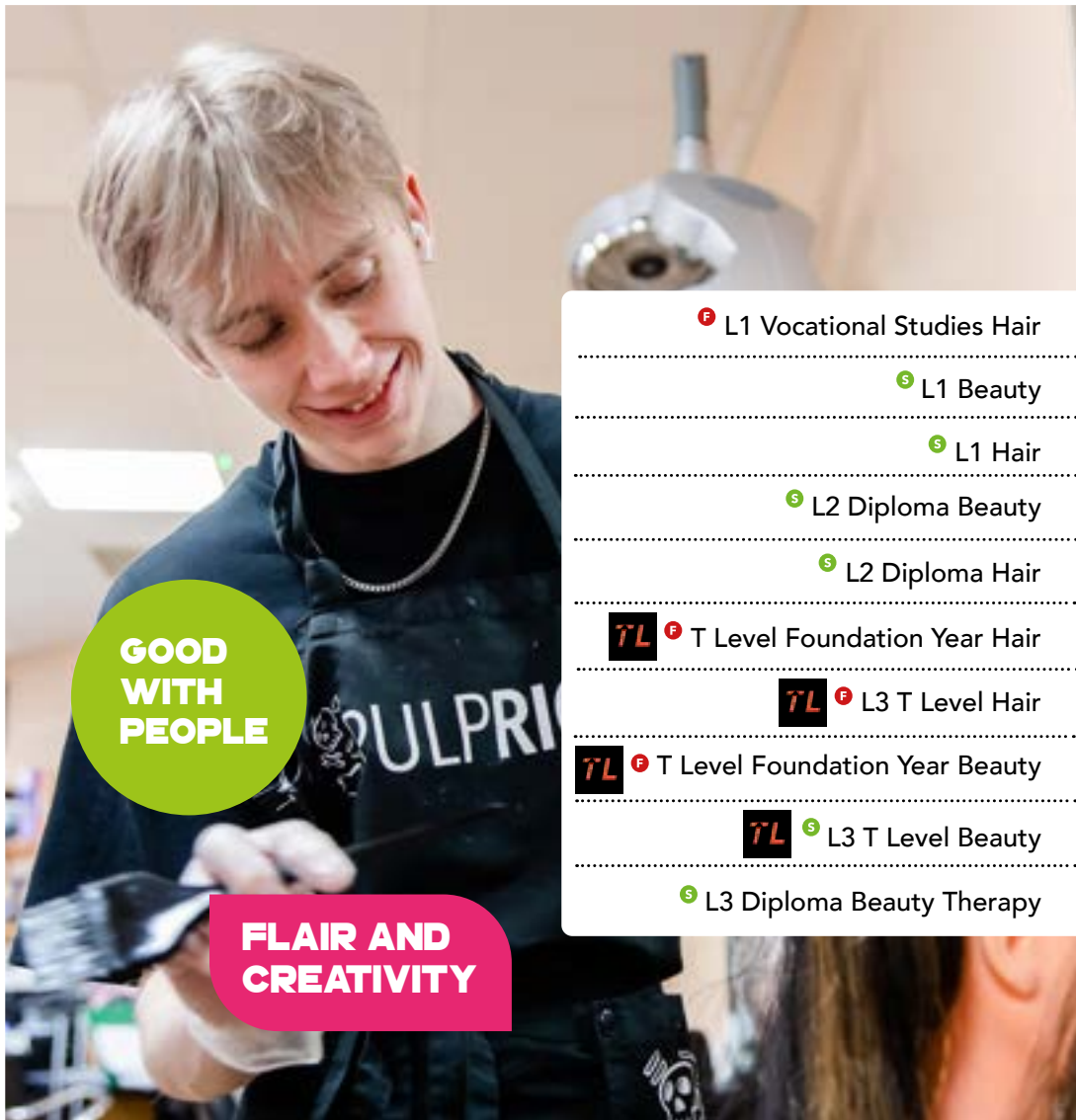
YOUR OPPORTUNITIES...

GCSEs are a foundation requirement for most industries. In addition to the added value that they give to your CV, GCSEs can also unlock more career choices and greater earning potential.



HAIRDRESSING & BEAUTY

**STYLE YOUR
FUTURE AND EARN
UP TO £70K AS A
SALON OWNER**



**GOOD
WITH
PEOPLE**

**FLAIR AND
CREATIVITY**

F L1 Vocational Studies Hair

S L1 Beauty

S L1 Hair

S L2 Diploma Beauty

S L2 Diploma Hair

TL F T Level Foundation Year Hair

TL F L3 T Level Hair

TL F T Level Foundation Year Beauty

TL S L3 T Level Beauty

S L3 Diploma Beauty Therapy

PROGRAMMES: HAIRDRESSING & BEAUTY

Our practical and highly regarded programmes will give you a choice of exciting career opportunities within the beauty therapy, hairdressing, make-up and complementary therapy industries. The diverse range of employment options includes work in salons, spas, TV, film, hotels, cruise ships, health farms and, in many cases, self-employment.

YOUR OPPORTUNITIES...

The sector is well established, with a lot of people being self-employed or freelance, owning a salon, working overseas or on cruise ships. As holistic therapies are growing in popularity, aromatherapists and reflexologists are in demand.



GREAT FOR PEOPLE WHO...

- Like meeting and working with a variety of people
- Have good interpersonal skills
 - Enjoy hands-on work
 - Want to make a name for themselves
- Like varied working hours



DID YOU KNOW ...

- All students gain real-world experience in our on-site Envy salons
- There are 44,880 beauty and hairdressing businesses operating in the UK with 3,110 in the South West*
- 60% of people working in hairdressing and 65% of people working in beauty are self-employed

*www.policybee.co.uk



HEALTH & SOCIAL CARE

**MAKE A DIFFERENCE
AND EARN UP TO
£75,000 AS A SOCIAL
SERVICE MANAGER**

**GOOD
WITH
PEOPLE**

**CARING +
SUPPORTIVE**

F L1 Vocational
Studies Care pathways

F L2 First Award Health
& Social Care

TL **S** **F** T Level Foundation Year
Health & Social Care

TL **S** **F** L3 T Level Health
& Social Care

TEAM WORKER

PROGRAMMES: HEALTH AND SOCIAL CARE

The health and social care sector includes a wide range of roles, with different skills required and varying levels of demand. The industry includes work that takes place within hospitals, care homes, nursing homes, hospices and dental practices. At SGS, our courses are designed to enable students to develop outstanding skills and to learn how to deliver exemplary standards of care and support. We provide plenty of opportunities for practical experience, allowing students to successfully progress into the industry.



GREAT FOR PEOPLE WHO...

- Want to help people
- Like working with a range of different people
- Enjoy a varied role
- Like hands-on work



DID YOU KNOW ...

- There is worldwide demand for people working in health and social care – so you could have opportunities to travel and work in other countries after training
- Salaries in social care vary from £11,000 to £70,000+
- 1.54 million people currently work in the social care sector. Because of the increasing number of disabled younger adults living longer and the growing number of older people needing care, adult social care is growing and the sector needs another half a million jobs, and people to do them, by 2035*

*www.healthcareers.nhs.uk

YOUR OPPORTUNITIES...

You really can forge a strong career in the health and social care sector. The National Health Service (NHS) employs more than a million people in England, whilst many others are employed in the private sector, in places such as private hospitals, clinics and nursing homes. Social care careers include working with children, young people, adults, families and older adults.

MEDIA



**PROJECT YOUR
FUTURE AND EARN
UP TO £100,000
AS A FILM DIRECTOR**

**STORY
TELLER**

**FORWARD
THINKER**

**ADAPT TO
CHANGE**

W L1 Diploma in Media

W L2 Diploma in Media

W L3 Extended Diploma in Animation

W L3 Extended Diploma in Film & TV

W L3 Extended Diploma in Sports Media

**W L3 T Level in Media
Broadcasting (Creative & Digital)**

PROGRAMMES: MEDIA

A lot of the jobs in the creative sector are new, particularly in media, and more new jobs are being created all the time. Fuelled by internet personalities, social media icons, bloggers, vloggers and more, careers in the media continue to boom. When it comes to exciting courses, excellent standards and strong links to the expanding arts industry, our broad range of media courses are designed for you. Home to the Bristol Academy of Media (BAM), SGS offers learners an opportunity to gain professional skills that will equip them for a career in the diverse and evolving media industry.

GREAT FOR PEOPLE WHO...

- Have a creative mind
- Like using computers
- Like working with others
- Are interested in using cameras

YOUR OPPORTUNITIES...

In the UK, the media sector employs 550,000 people and encompasses opportunities in animation, computer games, film production, interactive media, radio and television. Media also includes design for print, such as newspapers, magazines, brochures, typography, corporate identity, advertising, packaging, multimedia, TV and film graphics and illustration.

? DID YOU KNOW ...

- More than 6,000 creative businesses are based in the South West
- More daytime television is made in the South West than anywhere else in the country
- Over 800 million people each month watch digital content produced in Bristol & Bath, and 35% of all global natural history television is produced here*

*[www.bristolandbath.co.uk
/key-sectors/creative-media](http://www.bristolandbath.co.uk/key-sectors/creative-media)



MUSIC

**ROCK THE WORLD
AND BECOME A MUSIC
PRODUCTION MANAGER
EARNING UP TO £60,000**



CREATIVITY

L2 Diploma Music

L3 Diploma Music

**WORLD-CLASS
ENGINEERS AND
PRODUCERS**

PROGRAMMES: MUSIC

Whether you want to be a singer, songwriter, performer, producer or sound engineer, this course is designed to help you take the first step towards a career in the music industry. SGS is the only college in the country to have access to the famous Rockfield Studios (where bands such as Queen, Iggy Pop and Oasis have recorded). They exclusively offer SGS music students master-classes with world-class engineers and producers, as well as the opportunity to spend two days recording there. The music industry is constantly adapting and evolving. This course is designed to give learners a solid grounding in the theoretical knowledge and practical skills needed to succeed in this exciting industry.



DID YOU KNOW ...

- The UK market is the world's biggest consumer of music relative to its population size
- There are over 7,480 businesses involved in the UK music industry
- The UK is home to the world's largest independent record company
- Stroud campus houses its own recording studio that gives students regular and real opportunities to record and produce their own music

GREAT FOR PEOPLE WHO...

- * Have a creative mind
- Like using computers
- Like working with others
- Like to create music
 - Play music
 - Write songs
 - Like performing



YOUR OPPORTUNITIES...

Very few industries can offer the excitement that comes with working in the music industry. The first thing to remember while attempting to get your career started is that no job in this industry is too small. It's about getting your foot in the door. Once you are there, you can plot your rise to the top.

PERFORMING ARTS



**OUTPERFORM
YOURSELF AND
DESIGN YOUR OWN
DYNAMIC CAREER IN
THE ARTS INDUSTRY**

OUTGOING



**BORN TO
PERFORM**

L1 Diploma Performing Arts

L2 Diploma Performing Arts

L3 Diploma Acting

L3 Diploma Dance

L3 Diploma Musical Theatre

L3 Diploma Technical Theatre

PROGRAMMES: PERFORMING ARTS

BIPA has an incredible track record of providing talented and driven young people with the outstanding training they need to forge successful careers in the performing arts industry. Many students progress into reputable drama schools and dance conservatoires as well as our prestigious BIPA HE programmes at University Center WISE, or they go directly into employment. Our teaching focuses on building industry led performance skills together with academic study. Students take part in highly professional performances in our Olympus and Studio theatres and are also given the opportunity to perform in the wider community and beyond.



YOUR OPPORTUNITIES...

Studying performing arts can provide a variety of job options within the industry. Students can become actors, producers, theatre technicians, dancers or directors in theatre, film, television and live events and education.

GREAT FOR PEOPLE WHO...

- Have a passion for creating theatre
- Have a creative outlook
- Are looking to enhance their performance skills



DID YOU KNOW ...

- It is estimated that there are 286,000 UK jobs in music, performing and the visual arts*
*www.vercida.com
- Performing arts contributes nearly £6 billion a year to the UK economy*
*www.artscouncil.org.uk
- This department was recognised as 'Outstanding' in our last Ofsted inspection
- There are 18,000 theatre performances in London each year as well as thousands of region and touring productions up and down the county.



SPORT



**FINISH FIRST AND
BECOME A SPORTS
SCIENTIST EARNING
OVER £60,000**

**GAME
CHANGER**



**FITNESS
FANATIC**

L1 Diploma in Sport

L2 Diploma in Sports Coaching

L2 Diploma in Sports Industry

L2 Diploma in Esports

L3 Diploma in Sports Coaching

L3 Diploma in Sports Coaching
and Cycling Performance

L3 Extended Diploma
in Sports Coaching

L3 Extended
Diploma in Sports Fitness and
Personal Training

L3 Extended Diploma in
Sport & Exercise Science

L3 Extended Diploma
in Esports

PROGRAMMES: SPORT

The world of sport and exercise is experiencing an unparalleled period of growth, offering limitless career pathways. Our combination of world-class sports facilities and outstanding applied study programmes will help you stand out from the competition when you start a career in the sport and exercise industry.



YOUR OPPORTUNITIES...

There are many different jobs on offer in a wide range of areas in sport, health and leisure. You might be able to become a professional athlete if you have the talent and application, but your skills would be just as useful in other parts of the sector and beyond. You could go on to be a trainer, PE teacher, coach, sports therapist or nutritionist, or you could work in sports development – the roles are endless.

GREAT FOR PEOPLE WHO...

- Enjoy an active lifestyle
- Have good communication skills
- Like working with new people
- Aspire to make a positive contribution to the health and well-being of others



DID YOU KNOW ...

- There are well over 3000 sports and active leisure businesses in the South West
- Forecasts suggest that there will be substantial growth in health and fitness, sport and recreation and outdoor activities in the South West
- A well-qualified instructor can earn up to £21,000, increasing to around £40,000 at management level
- This department was recognised as 'Outstanding' in our last Ofsted inspection

PUBLIC SERVICES

**SAVE LIVES
AND EARN UP TO
£100,000 AS AN
ARMY OFFICER**

**COLLABORATIVE
WORKING**

**RESPONSIBLE
LEADER**

**TEAM
PLAYER**

 L2 Diploma in Public Services

 L3 Diploma in Public Services

 L3 Extended Diploma
in Public Services

PROGRAMMES: PUBLIC SERVICES

Our public services courses will help you to prepare for entry into a career in the uniformed services. As part of our courses, your study programme will provide knowledge, skills and experiences to give you an insight into the challenges and practical aspects of a career in the uniformed services, and will give you a chance to test your abilities. Experienced professionals will provide information and advice about the range of careers, as well as the fitness requirements and range of specialist training available. Public services learners from SGS generally progress into the uniformed service of their choice, or may continue their studies onto a higher education qualification.

GREAT FOR PEOPLE WHO...

- Like an active job
- Enjoy varied tasks in their role
- Like working with other people



YOUR OPPORTUNITIES...

If you want to work in the uniformed services, such as the police, fire, ambulance, army, navy or air force, a public services college course is a good start. The programme provides a range of industry opportunities such as police riot training, fitness testing with the Royal Marines and working with the fire service. It's a good way to find out whether that career is for you. The experience and skills that you gain will also be useful in a range of other careers.



DID YOU KNOW ...

- The army has around 140 different types of jobs
- Avon and Somerset Constabulary is one of the largest police forces in the country, policing a population of 1.5 million
- Avon Fire and Rescue Service are regularly looking for retained firefighters – these are people with other jobs who volunteer to train and get called out in emergencies

SGS SPORT ACADEMIES



BE TOP OF YOUR GAME AND PLAY FOR A PROFESSIONAL CLUB

PRACTICAL

American Football

Boxing

Cricket

Cycling

Male Football

Female Football

Golf

Netball

Male Basketball

Male Rugby Union

Female Basketball

Female Rugby Union

Table Tennis

DO WHAT YOU LOVE

PROGRAMMES: SGS SPORT ACADEMIES

SGS Sport was developed so that students could combine their passion for sport with the need for academic achievement. Students enrolled on any of our full-time courses at SGS Filton and WISE campuses can spend up to 16 hours a week participating in a wide range of sport academies.



YOUR OPPORTUNITIES...

The sports and recreation industry involves the running of all amateur and professional sports clubs, as well as all other sporting activities. Careers can include coaching (supporting sports people, sports teams, community teams or school groups), officiating (referees, umpires, judges, marshals or timekeepers), sports development (working with local people, schools, clubs and volunteers to organise sports activities and promote events) and sports or leisure facility management.



GREAT FOR PEOPLE WHO...

- Want to progress their skills in a particular sport
- Want to study for an academic qualification alongside a sport programme
- Enjoy being fit, active and competing in sporting competitions



DID YOU KNOW ...

- The department was awarded 'Outstanding' status in our most recent Ofsted inspection
- Two of our Alumni students were in the England Women's European Championship winning side and World Cup finalists 2022.
- Many of our past students have enjoyed great success, including the following:
 - One Gold medal at the Paralympics
 - Five professional rugby players
 - Four professional golf players
 - Eight professional football players
- Our students have won a 'host of Commonwealth medals'

TRAVEL & TOURISM

STUDY OUR LEVEL 2 QUALIFICATION IN CABIN CREW, TO DEVELOP THE SKILLS AND KNOWLEDGE NEEDED TO WORK IN THIS SECTOR.

BORN EXPLORER

GOOD WITH PEOPLE

F L2 First Certificate in Travel and Tourism

F L2 Cabin Crew and Aviation

F L3 Foundation Diploma Travel & Tourism

PROGRAMMES: TRAVEL AND TOURISM

See yourself as a holiday rep? Have ambitions of becoming cabin crew? Aspirations of managing your own hotel? Or maybe you want to see the world? If you answered 'yes' to any of the above, now is your chance to make your dreams a reality and secure your very own passport to the future with SGS. We offer a range of qualifications for those wishing to start work or to advance their careers in the travel, tourism and aviation industry.

We work closely with many industry experts and organisations, such as Jet2 and the Aztec Hotel to offer fantastic experiences, engaging lessons and valuable skills desired by employers in this industry.



DID YOU KNOW ...

- In 2021, travel and tourism in the United Kingdom generated, directly and indirectly, 4.11 million jobs*

*www.statista.com

- By 2025, the tourism industry in the United Kingdom is set to be worth over £257 billion.
- Many of our learners secure employment with top blue-chip companies, including British Airways and Virgin
- You will have the opportunity to undertake industry-specific work experience or potentially a 4-week internship in a foreign country

GREAT FOR PEOPLE WHO...

- Like flexible working hours
- Enjoy travelling
- Like working with a variety of people



YOUR OPPORTUNITIES...

Travel the world to exotic destinations whilst building a career in the travel and hospitality industry. There are a wide range of pathways to choose from, including cabin crew, tour guides and even events management. You will get the opportunity to experience new cultures, meet new people and build relationships.

STUDENT SUPPORT

ACADEMIC SUPPORT

The Academic Support team at SGS can help students with dyslexia, dyspraxia, Asperger's syndrome and other learning difficulties. We can provide specialist in-class support with literacy and numeracy, skills development sessions, testing and assessment for exam concessions and assistive technologies. We can also help you develop the study skills that you need to organise your coursework and plan assignments.

For more details on the academic support call 01453 761277 (Stroud Campus) or email info@sgscol.ac.uk

SUPPORT WITH ENGLISH AND MATHS

The English and Maths Extra team are able to support you with your studies, irrespective of whether you have an identified specific learning difficulty or just need support to progress. Specialist support is available and provided on an individual basis, outside of your lessons, where each session is tailored to suit your individual needs and at a time to suit you.

In order to access support with our team, please ask your tutor to refer you. Alternatively, contact English & Maths Extra by email at: englishandmathsextra@sgscol.ac.uk



ADDITIONAL LEARNING SUPPORT

The Learning Support team work across all the sites and coordinate the support and review process for learners with EHCPs, MyPlans/MyPlan+ and students who experience significant barriers to learning. We will coordinate your support package and ensure that it reflects the outcomes on your EHCP or MyPlan.

As part of this, you may have access to support from outside agencies, specialist mentors, In Class support, support in unstructured times or medical/physical support. The Learning Support Team will advise your curriculum areas by making recommendations, organising training and facilitating reasonable adjustments. It's important that you let us know about your support needs before you get to college, otherwise we may not be able to get the right support in place for you to achieve your best.

You can get in touch with us using the contact details below. For more details on the additional learning call 01453 761224 or email learningsupport@sgscol.ac.uk

SAFEGUARDING AT SGS

We do our very best to make sure that all our learners feel safe, valued, respected and listened to. We also make sure that all new and existing learners are made aware of what safeguarding is and how we can support them whilst at college. We are committed to promoting the well-being of all learners and protecting them from harm. We fully recognise that it is the responsibility of all staff to ensure that learners are safe within the college environment and this includes: raising awareness of and applying a zero-tolerance approach to bullying; ensuring learners are safe on and around college campuses and paying due regard to our responsibilities in relation to health and safety, child protection issues and risks of radicalisation. If you or someone you know is at risk of harm or committing harm to others, please talk to your learning Wellbeing mentor, tutor or one of our safeguarding officers.



COUNSELLING

Sometimes a sympathetic ear from friends and family isn't enough and you may find you need impartial help and support at some point during your time at college. SGS offers a confidential counselling service delivered by trained and experienced counsellors for students who want to explore any problems they may have and to receive more in-depth support.

FINANCIAL SUPPORT

The Money Management Service Team, (MMS), can provide you with information, advice and guidance on the financial support schemes that may be available to you if you are studying a further education course.

To find out more visit the MMS webpage www.sgscol.ac.uk/mms. If you have any queries after viewing the page then please email the MMS team mms@sgscol.ac.uk

THE WORK PLACEMENTS TEAM

All full-time learners will be expected to complete a minimum of 36 hours of work placement or work-related activity.

The Work Placement Team at the college will support you in sourcing relevant work placements and will help you to develop the necessary skills to contact employers yourselves. They also have links with a wide range of employers which you will have access to. We aim to develop the skills you need to ensure that you have a bright future when leaving the college.



COURSE SPECIFIC ENRICHMENT

As part of your study programme here at SGS College you will undertake 36 hours of course specific Enrichment which is focused around extending beyond your academic qualifications. A key part of this is the holistic development of the students where individual course areas will use the SGSPPlus+ framework to offer a range of activities, trips, visits and short courses to develop you as a person. Each individual course at SGS College does Enrichment slightly differently, so be sure to take up as many of the opportunities as possible.

TRANSPORT

All of our campuses are easy to get to by public transport, car or bike. South Gloucestershire and Stroud College may be able to help you with travel expenses, depending on your financial circumstances.

To find out if you're eligible, contact our Money Management Service team on 01453 761185 Alternatively, you can email mms@sgscol.ac.uk or visit www.sgscol.ac.uk/mms

MONEY MANAGEMENT SERVICE

The Money Management Service team (MMS) deal with financial support queries and applications for those studying a further education course with SGS College.

We are able to provide information, advice and guidance about Bursaries, Fee Waivers, (Legal Entitlements, Low Income and Benefit), The Welsh Education and Maintenance Allowance (EMA), Advanced Learner Loans, Childcare Support Schemes and Flexible Payment Plans. Our main schemes are listed below but for all schemes and further details visit our webpage www.sgscol.ac.uk/mms or our [E-Campus page](#).

Information on any invoiced course fees will be provided during your interview and will be confirmed in writing in the joining instructions sent to you before enrolment. Please be aware there could be additional costs for trips and any exam resits if required.

AGED 16-18:

If you are aged 16-18 as of 31st August in your first year of your study programme, or are aged 19 to 24 and in receipt of an Education and Health Care Plan, then you may be eligible for our 16-18 Bursary Scheme. If eligible we will assess your application to determine the elements of the Bursary Award that are relevant to you and that you meet the eligibility criteria for. This may include support with travel, kit/equipment, books, uniform, PPE, DBS checks, professional membership fees, young carers additional support, exam/material fees and other course related costs. If you are assessed as being eligible for a Vulnerable Young Persons Bursary

then we may also be able support with additional items required to enable you to get to College and complete your course.

AGED 19 PLUS:

If you are aged 19+ as of 31st August, and are not eligible for a 16-18 Bursary, then you may be eligible for one of our 19+ Bursary schemes (WECA, ESFA & Advanced Learner Loan). If awarded we will assess your application to determine the elements of the Bursary Award that are relevant to you and that you meet the eligibility criteria for. This may include support with travel, kit/equipment,





books, uniform, PPE, food whilst in College, DBS checks, professional membership fees, supervision and personal counselling fees (for the counselling courses), exam/material fees, childcare costs and other course related costs.

19 PLUS CHILDCARE SUPPORT:

If you are awarded any of our 19+ Bursaries and are aged 20 and over then we can add childcare support payments to your Bursary award for the time you are in College providing your child is with an OFSTED approved provider and not being looked after by a family member or friend. If you are aged under 20 you can apply to the Care 2 Learn scheme for support with childcare costs and any additional travel.

19 PLUS SUPPORT WITH PAYMENT OF COURSE FEES:

You may be eligible to claim funding from a Government Scheme to support with the payment of tuition, exam and invoiced material fees. Schemes can vary from year to year but could include Legal Entitlements (for full level 2 & 3 courses), Low Income and Benefit Fee Waivers (for courses up to level 2), or the Free Courses for Jobs Offer (for level 3 courses) to name a few.

MAKING PAYMENTS:

If you are not eligible for any of the available financial support schemes, then you could either pay all invoiced fees upfront via the College payment portal, or set up a flexible payment plan and pay via monthly instalments.

Payment Portal: Pay using your debit or credit card at <https://payments.sgscol.ac.uk/fees>

Flexible Payment Plan: These plans are managed by a company called FlexPay. Please be aware that there is a monthly admin charge attached to this option which you will be asked to pay upfront. If you are interested in finding out more, or would like to set up a payment plan then visit the MMS webpage www.sgscol.ac.uk/mms



5 Best Things about sgspplus+

SGSPPLUS+ provides learners with the opportunity to develop in a way that is three dimensional, equipping our learners with the skills necessary to contribute positively to society and thrive after their time with us.

WELCOME FEST

SGS WelcomeFEST is legendary, spread over the first few weeks at SGS you will get stuck into a number of different activities, from team building to escape rooms and campus scavenger hunts. You will have the chance to get to know the people on your course, learners on other courses and the SGS Team!

YOUR VOICE MATTERS

We value you, your thoughts and want you to be heard. The SGSPPLUS+ Team ensures you get the opportunity to feedback on how to make our College environment even better. Based on feedback, we've put in place a number of new learner spaces across all campuses to enhance the experience at the College. How will you shape the learner culture here at SGS?

COMMUNITY IS KEY

We believe in the power of connection. That is exactly why the SGSPPLUS+ Team create platforms to bring together communities across the College. Our learner committees celebrate and champion our diversity by furthering the ways in which we grow as an organisation. Our committees range from Racial Equality, LGBTQ+, Sustainability and Neurodiversity. You don't have to identify as any of the above, being an Ally is just as important! If you would like to join, speak to your Tutor or a member of the SGSPPLUS+ Team.

THE SGSPPLUS+ HUBS

The SGSPPLUS+ Hubs are the go-to social space at the College. If you're looking to unwind, relax, socialise and have fun then the SGSPPLUS+ Hub is the place to be with a range of activities and sessions available that cater to learner demand.

SGSPPLUS+ EVENTS

We are known for hosting a great event, and that doesn't stop with WelcomeFEST, throughout the year we welcome a range of speakers and activities on-site to develop your knowledge and understanding on a variety of different subjects. If you have an idea as to what you would like to see visit your campus, reach out to a member of the SGSPPLUS+ Team!



SGS BERKELEY GREEN UTC



sgs | HIGHER EDUCATION
& UNIVERSITY CENTRE

FULL-TIME COURSES FOR 14 –19 YEAR OLDS

At SGS Berkeley Green UTC we have a clear goal: to prepare students for the careers of the future.

We have two specialisms: Engineering and Digital Technology (including Cyber). Our unique curriculum enables students to blend academic and technical education. STEM subjects (Science, Technology, Engineering and Maths) are at the heart of our approach because they unlock an enormous variety of study and career opportunities for young adults. We deliver our teaching of these subjects in

stunning, state-of-the-art facilities.

Students benefit from a wide range of high-quality opportunities to work with local employers and participate in industry-related activities, including work experience. This helps us develop the full range of skills so necessary to future success, like teamwork, resilience and communication.



HELLO TO THE FUTURE YOU AT SGS COLLEGE

Applied Sports Coaching
& Physical Education

Applied Sports
Conditioning & Exercise

Art History

Business

Commercial Dance
for Stage & Screen

Computer Games Design
& Development

Design & Materials

Early Childhood Studies
Education & Learning

Fine Art

Game Art

Game Art & Production

Leadership & Management

Lighting Design & Operation

Media Production

Musical Theatre

Production & Stage
Management

Prosthetics, Modelmaking
& Digital Design

Specialist Make-up Design

Sports Media

Theatre Sound Design
& Operation

Zoological Management
& Conservation

UNI.SGSCOL.AC.UK



YOUR SUSTAINABLE FUTURE



At SGS we are passionate about your future - from your education and wellbeing to the world you live in.

With the growing concern for the future of our planet, we are committed to embedding sustainability into every aspect of our organisation by listening directly to our learners' views and ideas for creating environmentally friendly initiatives across all our campuses.

We have an Eco-committee made up of advocates for sustainable practices within the learner community and College as a whole. The Eco-committee creates and runs campaigns centred on environmental and sustainability issues whilst motivating and encouraging other learners to become involved.

The Eco-committee also democratically elect a lead Eco Officer who represents the views and interests of learners to the corporation, ensuring that learner voices are heard and valued.

For 23/24 one of our key focuses through the SGSPPLUS+ Personal and Social Development Programme is to develop a number of initiatives focused on sustainability including learner-built

recycling units, beach cleans, eco brick building and leading a Swap Shop to reduce the impact of fast fashion on the planet! In addition to this, the SGSPPLUS+ Team will work with you to ensure we are collectively contributing to creating a more sustainable travel community locally, mapping out sustainable travel options for learners and staff!



SGS ALUMNI



Network when you have completed your course or programme with us. Alumni benefits include:*

- A £500 alumni bursary for higher education courses;
- SGS volunteering opportunities;
- Gym facilities;
- Discounted Olympus theatre performance tickets;
- Discounted salon treatments;
- ...and much more

What will you achieve at SGS?

www.sgscol.ac.uk/alumni
alumni@sgscol.ac.uk

*terms and conditions apply

**Stay
connected
with the
SGS Alumni**

HOW TO FIND US

All our campuses are easy to get to by public transport, car or bike. For information specific to each campus, including links to timetables and how to book public transport, use the contacts below for your chosen campus.

F Filton Campus / SGS Sixth

Filton Avenue, Filton, Bristol, BS34 7AT
T: 0117 931 2121 F: 0117 931 2233

S Stroud Campus / SGS Create

Stratford Road, Stroud,
Gloucestershire, GL5 4AH
T: **01453 763424** F: **01453 753543**

W WISE/Brunel Campus

New Road, Stoke Gifford, Bristol, BS34 8LP
T: 0117 919 2601 F: 0117 377 6828

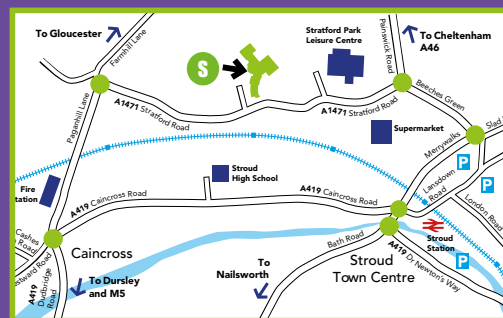
Q Bristol Queens Road Campus

Queens Road, Bristol, BS8 1PX
T: 0117 973 6259 F: 0117 973 4125

B Berkeley Campus (UTC)

Gloucestershire Science and Technology
Park, Berkeley Green, Gloucestershire,
GL13 9FB
T: **01453 761240**

Unit E & F Horizon, 38 Taurus Road,
Patchway, Filton, Bristol, BS34 6FE
T: **0800 0567 253**



HOW TO APPLY

1. FIND OUT WHICH COURSE IS RIGHT FOR YOU

- Look at the vocational, academic and apprenticeship options on our website or prospectus
- Talk to a careers adviser, teachers, parents, apprenticeship experts, employers and friends
- Come to our Open Events – they're a great way to get a taste of the College.

2. COMPLETE YOUR APPLICATION FORM

- You can apply online - it's really easy and you will get an immediate acknowledgement email
- You can also download an application form at **www.sgscol.ac.uk/digital-resources** and send it by mail

3. RECEIVE A GUARANTEED CONDITIONAL OFFER OF A PLACE

We will offer you a conditional place on the subject area you select (the level at which you study will depend on your final GCSE or A Level results and for some subjects reviewing a portfolio of work or audition).

4. JOIN A 'GETTING PREPARED FOR COLLEGE' TEAM

You will then be invited to join the College's Microsoft TEAMS site with some digital support through our 'PreparED' course materials. This will support you for studying at SGS in September 2024.

5. RESULTS DAY

Congratulations – on GCSE results day you can request a call from the department you applied to study with to confirm your place at SGS. If your grades are not what you expected, please do not worry. We will discuss options with you and ensure a suitable course is found.

6. ENROLMENT & INDUCTION

Welcome to SGS. All that is needed now is to complete your enrolment and then follow an induction programme to introduce you to college life. You are now part of our learning community at SGS. Good luck.



DISCLAIMER

Every effort has been made to ensure that the information contained in our prospectus is correct at the time of publication. South Gloucestershire and Stroud College makes no representation about the information contained in the documents and in the related graphics published in our prospectus. All such documents and related graphics are provided 'as is' without guarantee or warranty of any kind and all implied guarantees or warranties are excluded to the maximum extent permitted by applicable UK law. You must check any information fully before making any decisions based on that information.

South Gloucestershire and Stroud College will use reasonable endeavours to deliver programmes and other services in accordance with the descriptions provided. However, we reserve the right to make variations to course content, fees, entry requirements and methods of delivery, to discontinue or merge or combine courses and to make any other variations to regulations, both before and after admission to the College. If such actions or variations are reasonably considered necessary by the College, we will endeavour to communicate in good time any changes prior to them becoming effective.

Should industrial action or other circumstances beyond the control of the College occur, and thus interfere with our ability, or continuing ability, to deliver programmes or other services in accordance with the descriptions provided, the College will use all reasonable endeavours to minimise disruption as far as it is practicable to do so.

Nothing contained in our prospectus shall be construed to create any offer of contract or any contractual rights.

DATA PROTECTION ACT 2018 AND GDPR

SGS College takes its responsibilities as a data controller very seriously and is wholly committed to only using the personal data we hold for legitimate educational purposes and to keep you informed, in accordance with the law. The College's privacy notice is intended to provide information about how we collect, process and store your personal data. It also explains how we might share your data with third parties and explains your rights in relation to how we use your data. Please read it carefully at www.sgscol.ac.uk/privacy-statement. If you have questions regarding your personal data or its use, please contact us.

EQUAL OPPORTUNITIES

South Gloucestershire and Stroud College (SGS) is committed to promoting equality and diversity in all its activities and between the people that represent its constituency. We value the diversity of our workforce and learner population and aim to ensure that the highest equality and diversity standards are maintained and that discrimination and harassment are eliminated.

SGS OPEN EVENTS

Saturday 18th November 2023 - 10:00 - 13:00

Saturday 27th January 2024 - 10:00 - 13:00

Thursday 25th April 2024 - 17:30 - 20:00

Register Online:
www.sgscol.ac.uk/events/open-events



FIND OUT MORE

FREEPHONE: 0800 0567 253

