



Conferencing and Hospitality

at South Gloucestershire and Stroud College



Berkley Green
sgs
South Gloucestershire and Stroud College

John Huggett Engineering Hall





Multiple venues to suit your conferencing needs

Our three campuses are based in state-of-the-art buildings in great locations – WISE is within easy reach of the centre of Bristol, while our Stroud campus is based in the beautiful five valleys, in the county of Gloucestershire and our newest campus, Berkeley Green, occupies an accessible, uncongested location with easy access to Bristol, Gloucestershire and Cheltenham.

We can cater for a broad range of business needs, with wide-ranging facilities and services tailored to meet your requirements. Excellent customer care ensures that any event – large or small – will run smoothly.



Stroud Campus

Situated in the beautiful five valleys, SGS Stroud is based in a modern, state-of-the-art building that combines purpose-built facilities with the latest technology.

OUR SPACE

Our award-winning, contemporary building has large, light conferencing suites, a professional boardroom and numerous meeting rooms available to hire. With the latest technology smartboards and computers in every room the campus also benefits from free parking.

Choose from:

- Conference room
- Boardroom
- Client meeting rooms and training rooms
- IT training rooms

Conference room

Overlooking the idyllic Stratford Park this impressive space has a capacity of around 100 delegates.

Boardroom

This modern and professional space offers a comfortable surrounding for any event with a capacity for up to 21 people.

Meeting rooms

There are a number of meeting rooms that can be hired to smaller events and can accommodate between 6-8 people.

IT Training rooms

The campus offers various IT training rooms with interactive facilities for 16-20 people.

HOW TO GET HERE

SGS Stroud is conveniently located within easy walking distance of Stroud town centre, and within easy reach of Gloucester, Cheltenham and most local towns and villages.

Bus

A number of public bus services operate to Stroud from most neighbouring towns and villages. Our events team can provide you with information on the services available.

Car and motorbike

There is a large, free car park for the event organisers and attendees who choose to drive to college – vehicle registration is required to access the free parking.

Bike

Stroud has a number of cycle paths, making it relatively easy to get to our Stroud campus by bike. We also have a cycle parking area for event organisers and attendees to use.

Train

Regular trains to and from Gloucester, Cheltenham, and Cam and Dursley are available from Stroud railway station. The station is within walking distance of our Stroud campus.

HIRE RATES

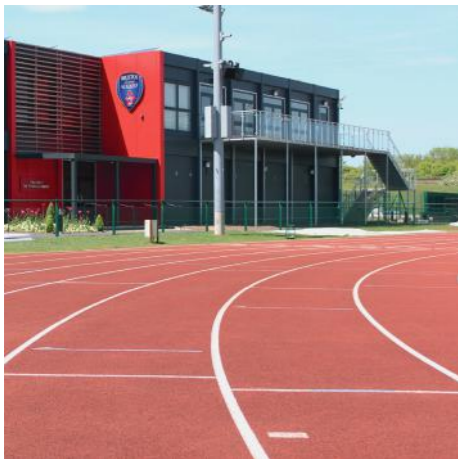
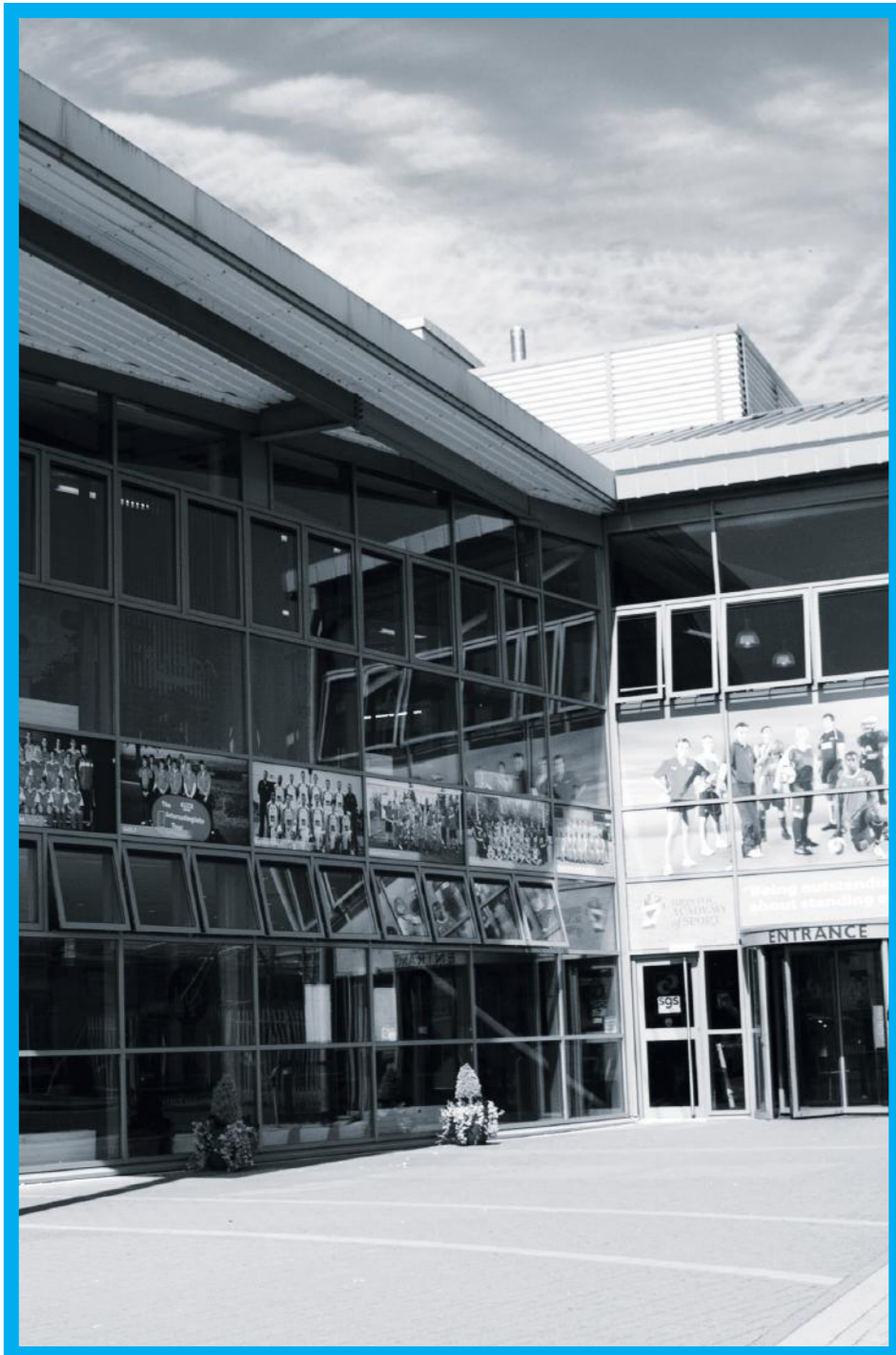
- **Classrooms/Boardroom** (110) are charged at £30 per hour plus VAT
- **Meeting rooms** are charged at £20 per hour plus VAT
- **Conference room** is charged at £50 per hour plus VAT (Half a conference room £30 per hour plus VAT)
- **IT Training rooms** - POA

There is a special 50% discount on hourly rate for room hire during college holidays (except Christmas break) but this is limited to the college non term-time hours. (8am-5pm)

CONTACT INFORMATION

Email CETStroud@sgscol.ac.uk or call 01453 763424.

All rooms are subject to availability around normal curriculum activities.



WISE Campus

WISE (the West of England Institute of Specialist Education) was opened in 2005 as a brand new state-of-the-art vocational centre for sport and the arts.

OUR SPACE

SGS WISE houses outstanding sports and arts facilities that are unrivalled in the South West along with numerous conferencing facilities.

The delegates have use of the 164 capacity car park and are supported by an in house team who will ensure the meeting or event runs smoothly. WISE also has on site caterers available to provide a varied range of hot and cold food and refreshments.

CONFERENCING FACILITIES INCLUDE:

- Olympus Theatre
- Studio 22 Theatre
- The Board Room
- The Presentation Suite
- Meeting rooms

Olympus Theatre - This impressive 250 seated theatre is ideal for holding large seminars.

Studio 22 - This theatre is perfect for holding smaller seminars providing room for up to 80 delegates.

The Board Room - This glass fronted room overlooking Bristol City Women's Football Club pitch is a unique location offering a comfortable surrounding for any event. With the latest IT equipment the room can hold up to 20 people.

The Presentation Suite - A modern and spacious room which can comfortably hold between 12-15 delegates.

Meeting rooms and classrooms - WISE offers a number of meeting rooms and classrooms for 20 - 60 people depending on the room, all equipped with IT facilities and the latest interactive whiteboards.

Additionally the campus offers specialist state-of-the-art facilities in sport and performing arts including:

Sport

- a sports hall for netball, basketball or table tennis
- eight-lane Olympic size running track
- five or seven-a-side football pitches
- 30m x 32m fully sprung indoor sports hall, seating up to 500 people
- 40m x 60m indoor 3G artificial football/rugby pitch
- full-size floodlit outdoor 3G artificial football/rugby pitch
- 12 five-a-side football pitches (can be hired through GOALS)
- eight-lane 400m athletics track
- 40-station gymnasium, weights room and human performance lab (requires qualified/insured individuals)
- American football grid iron
- Boxing Academy
- fully licensed sports bar (can be hired through GOALS)

Performing Arts

- Olympus Theatre, seating up to 250 people
- Studio 22, seating up to 80 people
- Four rehearsal rooms
- Four dance studios
- Technical theatre workshop
- Three dressing rooms

HIRE RATES

PERFORMING ARTS HIRE RATES:

We have 4 dance studios, these cost £20 per hour or £100 per day.

- The Olympus Theatre seats up to 250 and costs £500 - £650 per day or £2,600 per week. This includes the use of the green room, two dressing rooms, a rehearsal room and a dance studio on the ground floor. It also includes the services of a technician, a second technician is charged at £10 per hour.
- Studio 22 seats up to 80 and costs £250 - £350 per day. It doesn't include any other space or a technician, again the charge is £10 per hour for tech support and £100 per day for a room to change in.

SPORTS FACILITIES HIRE RATES:

	FULL PRICE	MATCH RATE
• 3G Pitch 1	£95	£240 (Football)
• 3G Pitch 2	£140	£350 (Football)
• 3G Pitch 3	£150	£600 (American Football)
• Sports Hall (Half Usage)	£55	
• Sports Hall (Whole Usage)	£110	£220 (Netball/Basketball)
• Indoor 3G	£110	£220 (Football)
• Track Shared Price	£72	
• Grass Pitch 1 & 3 Football	£90	£225 (Football)
• Grass Pitch 2 Rugby	£110	£220 (Rugby)
• Grass Pitch 4 Rugby	£150	£300 (Rugby)
• Gym	£110	
• Pre-Match Meeting Room	£30	
• Room Hire	£40	
• Cancellation	£50	

All charges are per hour (Match Rate 2.5 hrs)
American Football Match 4 hrs @ £600 to include 4 changing rooms.
All other hire facilities to include at least 2 changing rooms.
Other than sports hall, **NO HALF** pitch or facility are hired
All discounts to be agreed by Ian Holtby, Campus Manager.

HIGHER OR ATHLETICS EQUIPMENT

- HIGH JUMP - £5.50 per hour
- LONG JUMP - £5.50 per hour
- HURDLES - £5.50 per hour

Areas used must be covered and sand swept after use, ready for next users.

MEASUREMENTS

- SPORTS HALL – 32M X 34M (G231) -STAGED SEATING FOR 476 (24M WITH SEATS OUT) CAPACITY 600
- 3G - INDOOR ASTRO (G57) – 54m x 36m
- 3G1 - OUTDOOR ASTRO – FLOODLIT (3G) - 96m X 62m
- 33G2 - OUTDOOR ASTRO – FLOODLIT (4G) – 110m x 75m
- ATHLETICS TRACK – 8 LANE

Managed by Fran Hollingsworth

- OLYMPUS THEATRE – 250 SEATS / LOFT THEATRE – 80 SEATS

HOW TO GET HERE

Bus - Travel by bus to SGS WISE is easy. You can view all bus services within the Bristol area using Bristol City Council's bus timetables. Alternatively, you can call 0871 200 2233.

Car and motorbike - Event organisers and attendees have access to a free carpark – vehicle registration is required to access the free parking. Also, as parking is limited, we strongly encourage car sharing. Car Parking spaces – 176 / City of Bristol Car Park - 80 Spaces

Bike - If you prefer to cycle to your event, SGS WISE has a cycle parking area for event organisers and attendees to use, with secure storage for bikes.

Train - Both Bristol Parkway and Filton Abbey Wood railway stations are just a ten minute walk from SGS WISE, making train travel a convenient option.

CONTACT INFORMATION

For Performing Arts based room hire, please email fran.hollingsworth@sgscol.ac.uk or call 0117 919 2639

For Sports facilities hire, please email externalbookings@sgscol.ac.uk or call 0117 919 2601/2602

All rooms are subject to availability around normal curriculum activities.



Berkeley Campus

Strategically located 10-12 mins from both J13 and J14 of the M5, Berkeley Green sits on the banks of the River Severn providing a unique stress free environment.

HIRE RATES

- Classrooms are charged at £30 per hour plus VAT
- Meeting rooms are charged from £20 per hour plus VAT
- Specialist facilities - POA

CONTACT INFORMATION

For room hire at Berkeley Green, please email Pete Barrett at pete.barrett@sgscol.ac.uk or call 01453 76 1260.

All rooms are subject to availability around normal curriculum activities.

OUR SPACE

Located on the Gloucestershire Science and Technology Park we have access to a range of facilities to suit most requirements. On site facilities include the Riverside Restaurant & Refectory over 1000 free parking spaces. Rooms with smartboards and computers are available.

Choose from:

- Conference room
- Launch Pad boardroom overlooking the River Severn.
- Client meeting rooms and training rooms
- Dedicated suites and buildings for large scale events.
- We can also facilitate the usage of various "third party" specialist spaces including Digital and Cyber Training and Engineering facilities.

HOW TO GET HERE

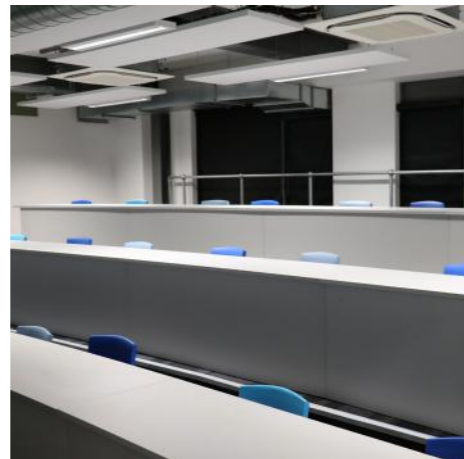
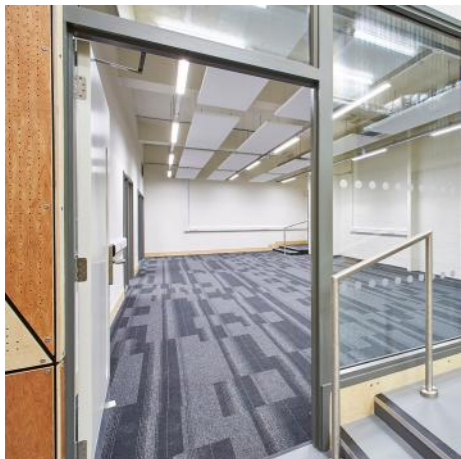
SGS Berkeley Green is located close to the Town of Berkeley. Easily access from the north or south via J14 and J13 of the M5, follow signs to Berkeley along the A38. From Berkeley Gloucestershire Science and Technology Park(GSTP) is sign posted and is adjacent to the former Berkeley Power Station approx. 2 miles to the west of Berkeley town centre.

Bus

Stagecoach service 62 comes directly to the GSTP site.

Train

Cam stations is located a 10 minute drive from GSTP providing regular services to Bristol, Gloucester, Cheltenham and beyond.





Hospitality & Catering

Whatever event you wish to hold at SGS, our skilled chef can prepare catering to suit. Our dedicated team offers a range of choice and a professional service. Ranging from a buffet breakfast, lunch or simply tea, coffee, soft drinks, biscuits and pastries, we can cater to your needs.

Where to stay

Close to the WISE Campus you'll find:

Travelodge – Bristol Filton
Tel: 08715 591883
www.travelodge.co.uk

Holiday Inn – Bristol Filton
Tel: 0871 9429014
www.ihg.com/holidayinn

Premier Inn – Bristol Filton
Tel: 0871 527 8164
www.premierinn.com

Close to the Stroud Campus you'll find:

Premier Inn – Stroud
Tel: 0871 527 9052
www.premierinn.com

The Imperial House – Stroud
Tel: 01453 764077
www.imperialhotelstroud.co.uk

Close to Berkeley you'll find:

The Malt House
Tel: 01453 511177
www.themalthouse.uk.com

**Best Western Bristol North
The Gables Hotel**
Tel: 01454 260502
www.bestwestern.co.uk

How To Find Us

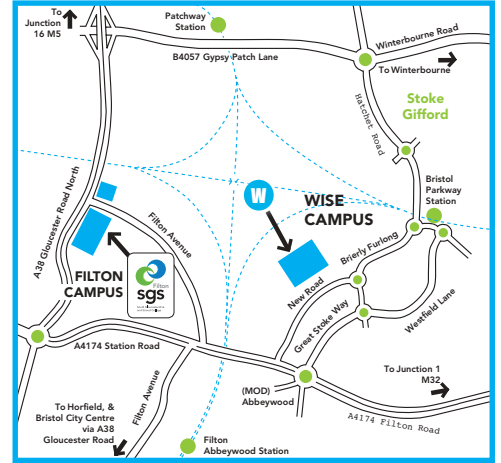
All our campuses are easy to get to by public transport, car or bike. For information specific to each campus, including links to timetables and how to book public transport, use the contacts below for your chosen campus.

South Gloucestershire and Stroud College

S **Stroud Campus** (Registered Office)
Stratford Road,
Stroud,
Gloucestershire,
GL5 4AH
T: 01453 763424 F: 01453 753543

W **WISE Campus**
New Road,
Stoke Gifford,
Bristol, BS34 8LP
T: 0117 919 2601 F: 0117 377 6828

B **SGS Berkeley**
Gloucestershire Science
and Technology Park,
Berkeley Green,
Gloucestershire,
GL13 9FB
T: 01453 761242



DISCLAIMER

All information is correct at the time of this guide being produced (November 2019) and is not contractually binding. Any changes will be communicated at the time of booking or on request.

TO FIND OUT MORE



FREEPHONE: 0800 0567 253

www.sgscol.ac.uk | info@sgscol.ac.uk